

2903/500 Pacific Highway St Leonards NSW

2 2 1

Nestled within the prestigious Landmark complex, this meticulously designed apartment on the 29th floor offers a blend of luxury and functionality. Boasting a spacious interior and premium amenities, it promises a sophisticated urban lifestyle.

- * Two bedrooms with a large entertainment area on the North-East corner
- * Enjoys direct views out North with ample natural light
- * All bedrooms plus living room connecting to large entertainers' balcony
- * Gas cooking kitchen, island benchtop & Miele appliances
- * Bedrooms with built-in robes & master with ensuite
- * Abundance of storage cupboards, video intercom & lift
- * Easily accessible to secure car space and storage cage
- * Views over Manly Heads and northbridge precinct

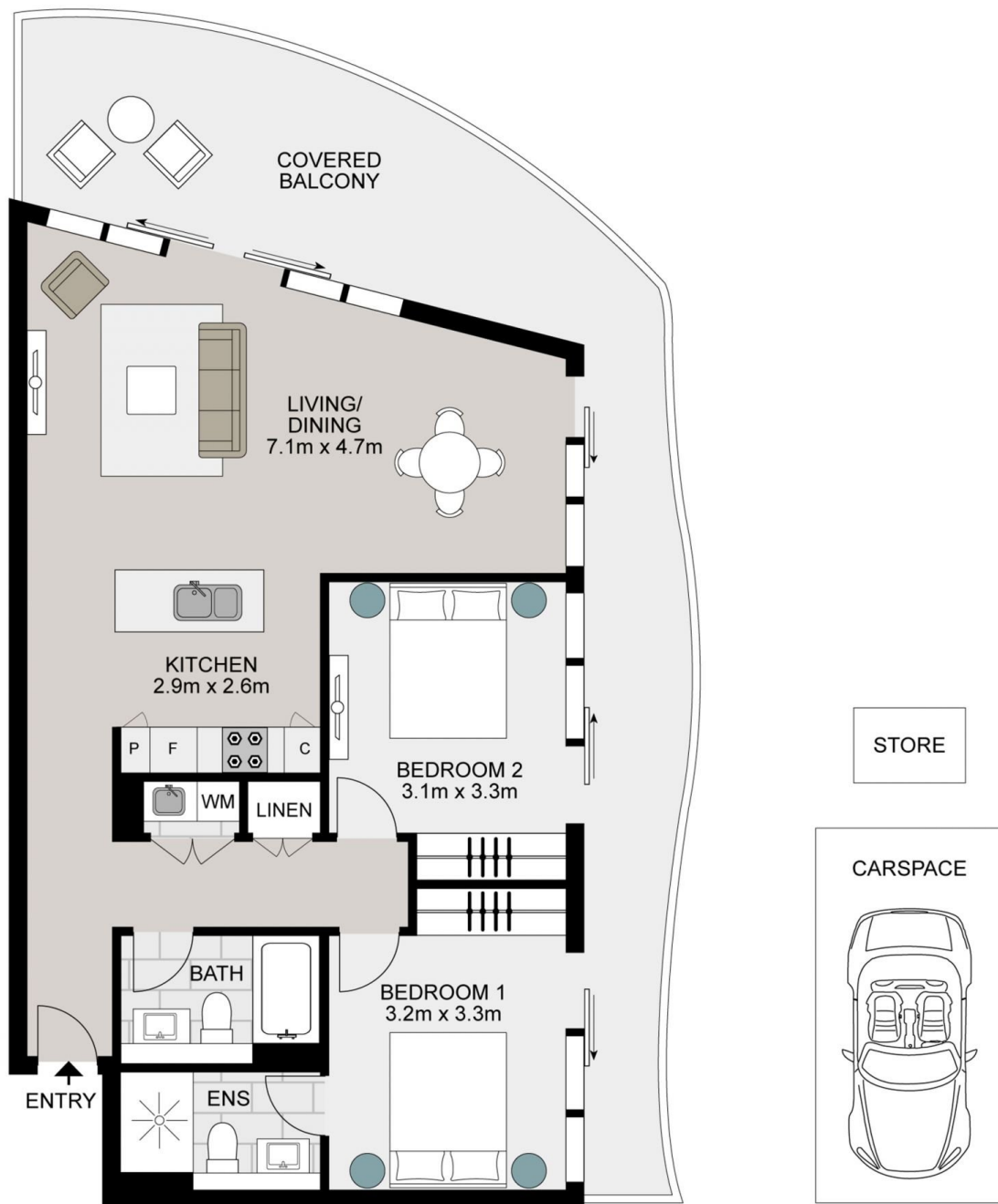
Price : Contact Agent
Building Size : 116 sqm
Land Size : 135 sqm
View : <https://www.midlandgroup.com.au/8082097>



Jeffrey Li
02 9884 8228



Faye Dai
02 9884 8228



TOTAL STRATA AREA: 135m²
TOTAL LIVING AREA: 116m²



2903/500 Pacific Highway, St Leonards

Not to scale Measurements are approximate ,Drawn For Marketing purposes only.

NORTH

