



2607/486 Pacific Highway St Leonards, NSW



## Resort Style Living in Mirvac's St Leonards Square Tower

The apartment on level 26 of the 'Jackson' benefits from a wealth of high-end, on-site amenities that include a pool, well-equipped gymnasium, music and cinema rooms and a building manager. Indulge in an unbeatable lifestyle, a stroll to express bus services, the rail, popular cafes and eateries, Crows Nest and the to-be-completed brand new Metro Station.

### Home Features:

- ? Open plan kitchen, living/dining flow to covered balcony
- ? Stone bench tops and gas stainless steel Miele appliances
- ? Generous bedrooms with built-in robes, one with an ensuite
- ? Stylish fully tiled bathrooms

There are 29 visitor spaces, 14 car share spaces, and 18 electronic car charging bays. Res

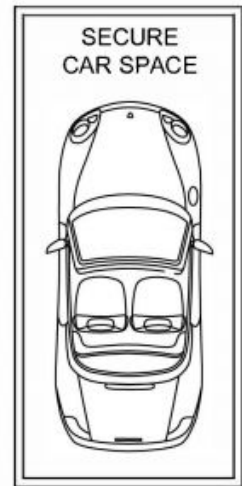
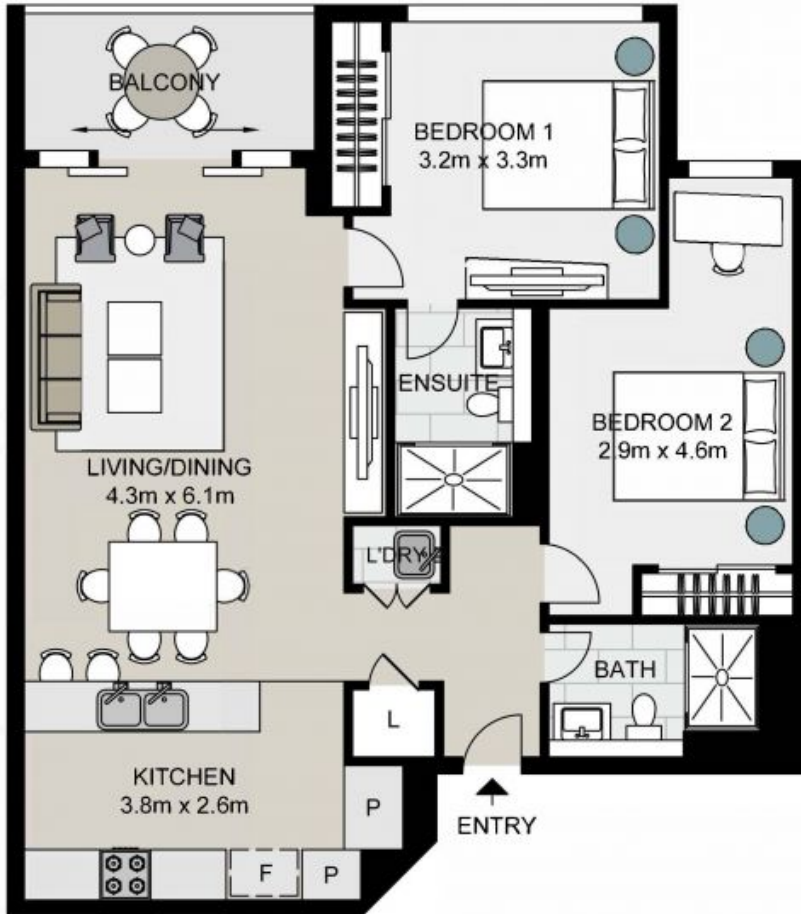
## Contact Agent

**Type** : Apartment  
**Land** : 100 m2  
**Building Size** : 83 m2

**Council Rates** : \$373.00 p/q  
**Water Rates** : \$171.41 p/q  
**Strata Rates** : \$1,957.00 p/q

**Jeffrey Li**

0404 135 763



2607/486 Pacific Highway, ST LEONARDS

Not to scale . Measurements are approximate . Drawn For Marketing purposes only .

