



2208/161 Clarence Street Sydney, NSW

 3
  2
  1

Luxury Three Bedroom Crafted with Utmost Sophistication in Sydney CBD

In the heart of Sydney's CBD, the 'ARC', a brilliant creation of the renowned architect "Koichi Takada," masterfully merges conventional designs with a modern twist. The complex boasts an array of remarkable amenities, including a state-of-the-art Ice Cave swimming pool, a fully-equipped gymnasium, concierge services, and a stunning rooftop horizon lounge.

Key features include:

- A creative vision by globally renowned architect Koichi Takada
- Located on the 22nd floor with a spacious open plan layout
- Well-appointed gas kitchen with stone benchtops and island, S/S Miele appliances including dishwasher and microwave
- Ducted air conditioning throughout

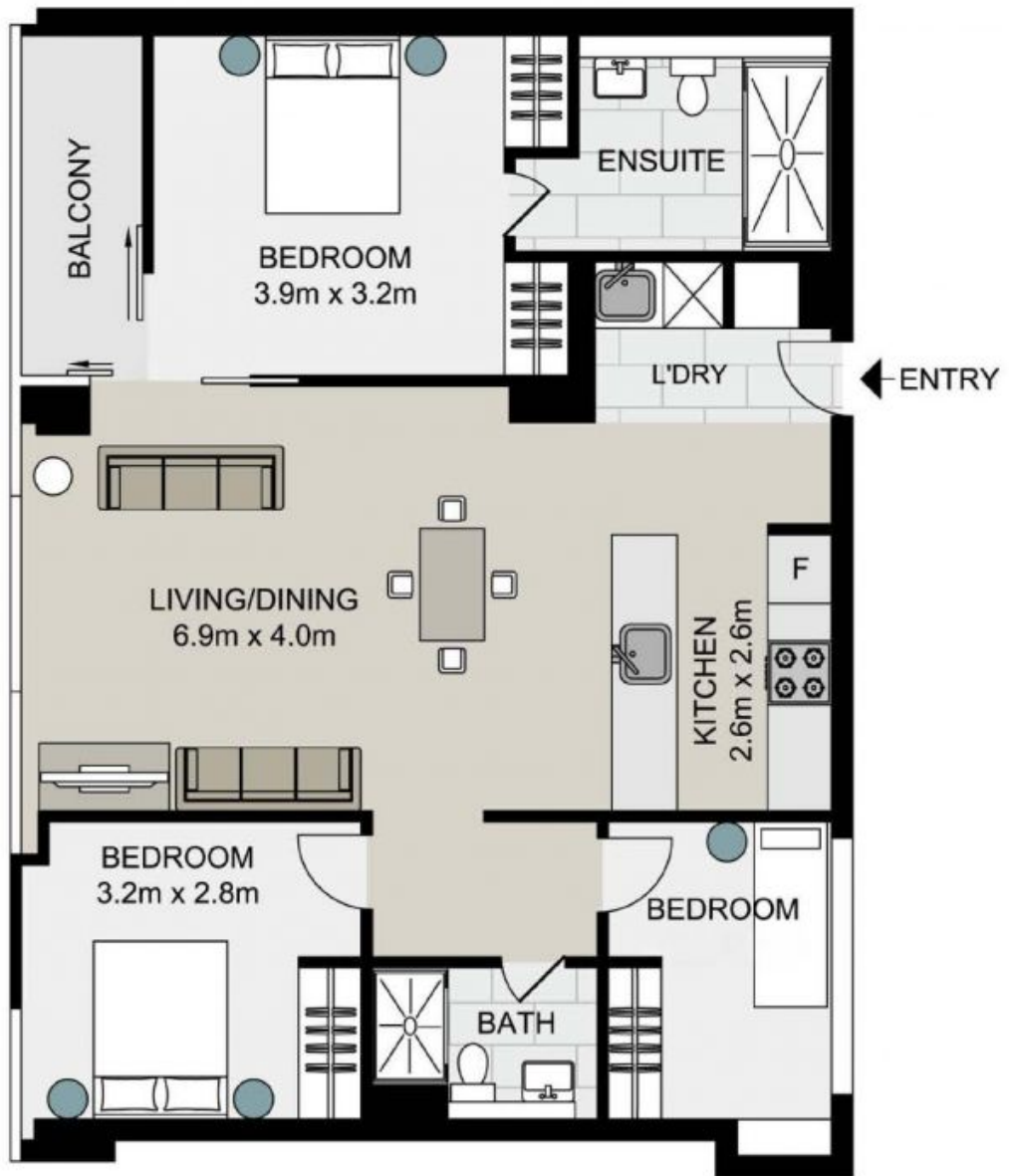
Contact Agent

Inspect : Wednesday, 17th July 2024 3:00 - 3:30
Type : Apartment
Land : 114 m2
Building Size : 114 m2

Council Rates : \$370.00 p/q
Water Rates : \$266.00 p/q
Strata Rates : \$3,887.40 p/q

Jeffrey Li

0404 135 763



2208/161 Clarence Street, SYDNEY

Not to scale . Measurements are approximate . Drawn For Marketing purposes only .

