



1205/486 Pacific Highway St Leonards, NSW



Oversized Two Bedroom Layout in St Leonards Square "Mirvac"

With sweeping city views across Sydney Harbour and CBD, this apartment promises a lifestyle of sophistication in the resort-style 'St Leonards Square' building. Pure indulgence offers floor-to-ceiling windows, a versatile floor plan, and sweeping views of Sydney Harbour and its surroundings.

- Floor-to-ceiling glass windows with dazzling day/night views
- Modern island kitchen with stone benchtop and built-in Miele appliances
- Extra large-sized master bedroom, complete with built-ins (Master with ensuite)
- Upgraded Stone bench tops and gas stainless steel Miele appliances
- Luxurious bathroom equipped with feature tiled wall
- Ducted air-conditioning, video intercom, and NBN connectivity
- Each tower has its own dedicated 24-hour concierge service

Type : Apartment

Land : 106 m2

Building Size : 89 m2

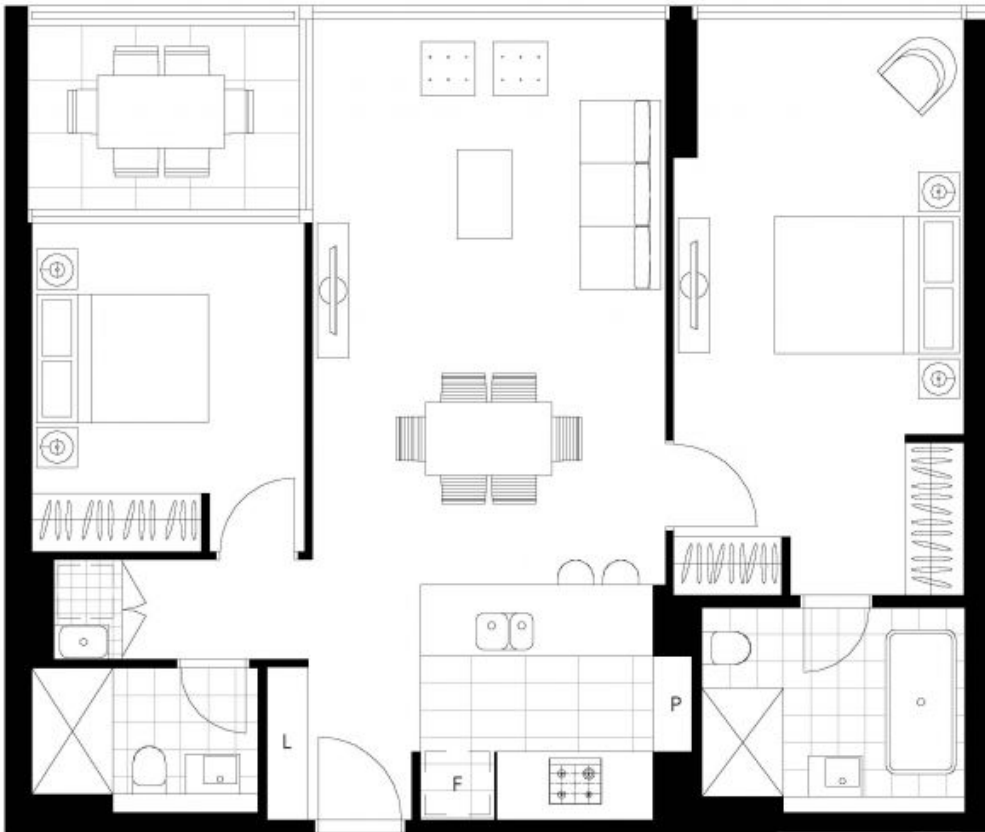
Council Rates : \$377.00 p/q

Water Rates : \$210.46 p/q

Strata Rates : \$1,983.07 p/q

Jeffrey Li

0404 135 763



TOTAL STRATA AREA: 106 sqm
TOTAL LIVING AREA: 89 sqm