

1101/500 Pacific Highway St Leonards, NSW

 2
  2
  1

Desirable Corner Northeast apartment with wrap around balcony

- * Enjoys North-West sun with a wrap-around balcony over the Friedlander place
- * Spacious living and dining with a separate bedroom area
- * All bedrooms plus living room connects to large entertainers' balcony
- * Gas cooking kitchen, island benchtop & Miele appliances
- * Bedrooms with built in robes & master with ensuite
- * Abundance of storage cupboards, video intercom & lift
- * Easily accessible to secure car space and storage cage
- * Amenities include a concierge, gym, pool, spa, sauna, music room, theatre room, and Tesla recharging bay

1 car space with storage

Deposit taken \$1,250 pw

Type : Apartment

Date Available : Monday, 29th July 2024

Building Size : 82 m2

Tiffany Or

0455582288

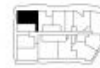


- F Fridge
- L Laundry
- P Pantry
- ST Storage
- W Wardrobe

Apartment Type	2 Bedrooms
Bathrooms	2
Internal	92 sq*
External	38 sq*
Parking	1

THE LANDMARK

Sculpted from Sydney



Two Bed Apartment Type A

Disclaimer: Colliers International does not guarantee, warrant or represent that the information contained in this advertising and marketing document is correct. Any interested parties should make their own enquiries as to the accuracy of this information. We exclude all implied or implied terms, conditions and warranties arising out of this document and any liability for loss or damage arising there from.