



1206/486 Pacific Highway St Leonards, NSW



## Stylish 2-Bedroom Apartment with a Perfect Blend of Space & Convenience in a Mir

Discover the mesmerizing beauty of Sydney Harbour and the CBD from this beautiful apartment within 'St Leonards Square' complex. Embrace sophistication with its expansive floor-to-ceiling windows, flexible layout, and captivating views of the harbor and beyond.

### Key Features:

- Bedrooms with built-in wardrobes for added convenience
- Spacious open-plan living and dining area with lofty ceiling height
- Modern island kitchen featuring stone benchtops and premium Miele appliances
- Secure car space and 2 storage cages

**\$1,550,000**

**Type** : Apartment  
**Sold Date** : Monday, 8th July 2024  
**Land** : 106 m2  
**Building Size** : 89 m2

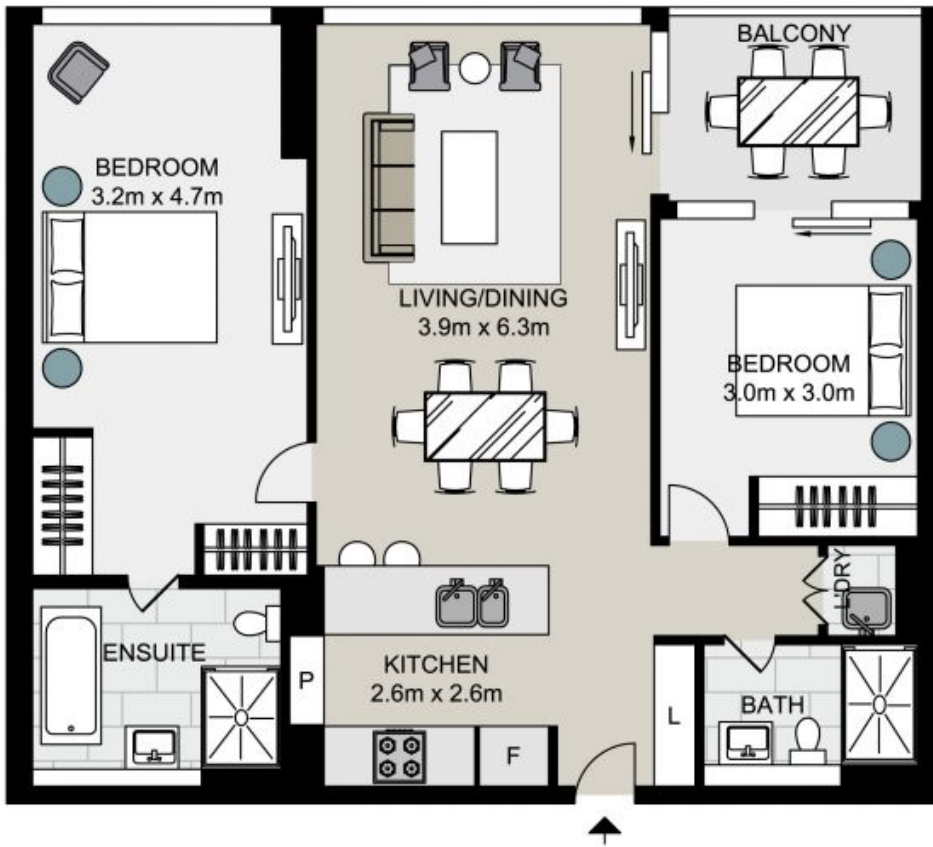
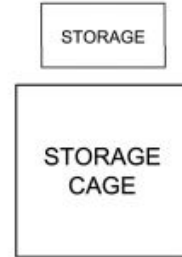
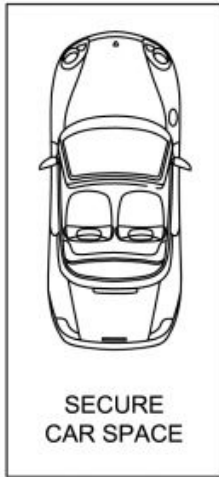
**Council Rates** : \$377.00 p/q  
**Water Rates** : \$210.46 p/q  
**Strata Rates** : \$1,460.99 p/q

**Jeffrey Li**

0404 135 763

**Faye Dai**

0423 677 160



**1206/486 Pacific Highway, ST LEONARDS**

Not to scale . Measurements are approximate . Drawn For Marketing purposes only .

