



1502/486 Pacific Highway St Leonards, NSW



3



2



2

## Luxury Living in This Three Bedroom Mirvac Apartment

St Leonards Square exemplifies Mirvac's reputation for sophisticated living in Sydney. With superb amenities, exceptional harbour and city views and a vibrant ground floor plaza, this is an iconic destination that will define St Leonards for years to come.

Features include:

- Open-plan living with views all the way to Harbour Bridge and the Blue Mountains
- Dark colour scheme Gourmet kitchen with feature tinted mirror splashback and premium Miele appliances including five gas cooktops, Meile dishwasher and ovens
- Full-height glazing to maximise views and capture natural light in the apartment
- Excellent storage including built-in wardrobes and additional external storage
- Two car parking spaces and storage
- Excellent location, just 5km from the Sydney CBD and close to leading schools, universit

## Deposit Taken!

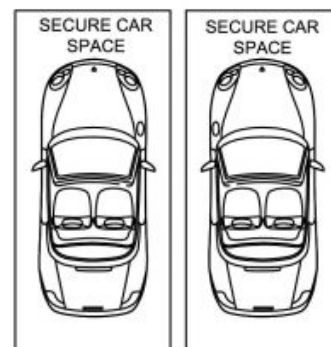
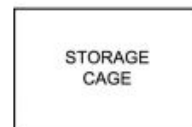
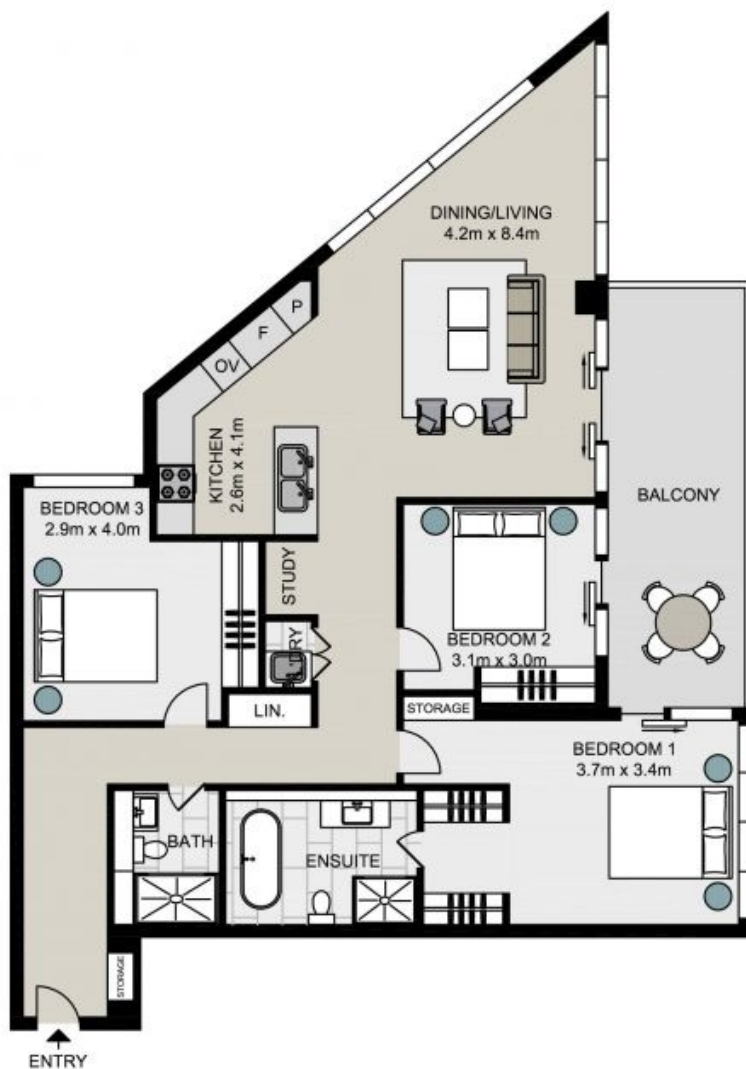
**Type** : Apartment  
**Date Available** : Monday, 17th June 2024  
**Land** : 160 m2  
**Building Size** : 128 m2  
**Bond** : \$7,120.00

**Jeffrey Li**

0404 135 763

**Jeffrey Li**

0404 135 763



Total living area: 128sqm  
Total strata area: 160sqm

1502/486 Pacific Highway, ST LEONARDS

Not to scale . Measurements are approximate . Drawn For Marketing purposes only .

