




5106/500 Pacific Highway St Leonards, NSW

 3  2  2

Oversized 3 Bedroom in The Landmark Residence

This oversized 3-bedroom apartment has been thoughtfully designed to provide abundant space and natural light, enhanced by expansive floor-to-ceiling glass to draw the breath-taking views. It is ideal for entertaining with a wrap-around balcony, separate dining area and stunning views of the

As a resident of the Landmark you will enjoy the resort like amenities including, 20m lap pool, spa and European style sauna, virtual golf range, cinema rooms, dining rooms, yoga room, music room and kids playroom.

- Spacious 140 square meters of internal space
- 36 square meters wrap-around balcony
- East-West aspect
- Gourmet kitchen with natural stone island bench

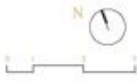
Contact Agent

Inspect : Wednesday, 17th July 2024 12:30 - 1:00
Type : Apartment

Council Rates : \$180.00 p/q
Water Rates : \$190.00 p/q
Strata Rates : \$3,300.00 p/q

Jeffrey Li

0404 135 763



R	Fridge	Apartment Type	3 Bedrooms
L	Laundry	Bathrooms	2
ST	Storage	Bedroom	336 sq'f
P	Pantry	Bedroom	30 sq'f
W	Wardrobe	Parking	1

THE
LANDMARK
 AT LESCHNER STREET
Suburban from Sydney



Three Bed Type F -2

Disclaimer: Colours, proportions and scale are approximate. All items are illustrative only. The information contained in this advertising and marketing document is correct. Any floor plan or picture should not be taken as an indication of the accuracy of the information. You should always check the actual conditions and specifications of the development and any liability for loss or damage arising from this.