



2107/486 Pacific Highway St Leonards, NSW



Upscale two-bedroom residence situated in the heart of St Leonards

St Leonards Square embodies Mirvac's dedication to elegant living in Sydney, featuring top-tier amenities, convenient access to rail services, the future Crows Nest Metro, and St Leonards Shopping Plaza all conveniently within short walking distance.

Home Features:

- The open-plan kitchen seamlessly connects to the living/dining area, leading to a covered balcony
- Stone bench tops and gas stainless steel Miele appliances
- Spacious bedrooms featuring built-in closets, one of which includes its own ensuite
- Sleek, fully tiled bathrooms with a modern aesthetic

There are 29 visitor spaces, 14 car share spaces, and 18 electronic car charging bays. Res

Contact Agent

Inspect : Wednesday, 17th July 2024 11:30 - 12:00
Type : Apartment
Land : 103 m2
Building Size : 83 m2

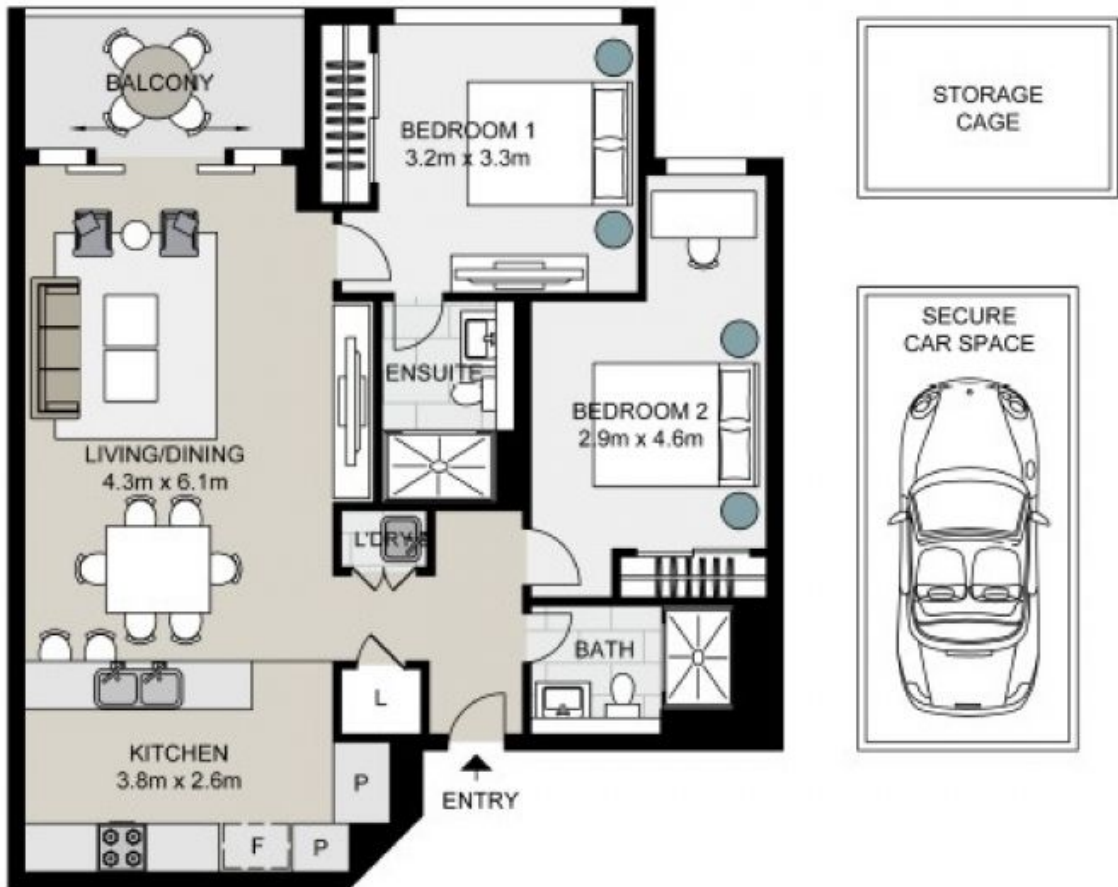
Council Rates : \$373.73 p/q
Water Rates : \$178.00 p/q
Strata Rates : \$1,413.40 p/q

Jeffrey Li

0404 135 763

Faye Dai

0423 677 160



Total living area: 83 sqm
 Total strata area: 103 sqm

2107/486 Pacific Highway, ST LEONARDS

Not to scale . Measurements are approximate . Drawn For Marketing purposes only .

