


505/8 Central Park Avenue Chippendale, NSW

 2
  2
  1

## Ultra-hip Inner City Living with Beautiful Garden View

This modern apartment building is located in the most desirable location, inner city - Central Park. This iconic residential building is designed to impress you with a unique vibrant inner city living experience. Numerous funky cafes, restaurants and entertainment and extremely convenient transport by your doorstep. This stunning apartment is ideal for those who dedicate to seek a versatile, modern & convenient living with no question.

### Features:

- Metres to Central Station, moments to TAFE, UTS, USYD
- Minute to retail shops, Woolworth, dining and cafes.
- Modern integrated gas kitchen with high quality appliances
- Secure parking

\$1400 pw

**Type** : Apartment

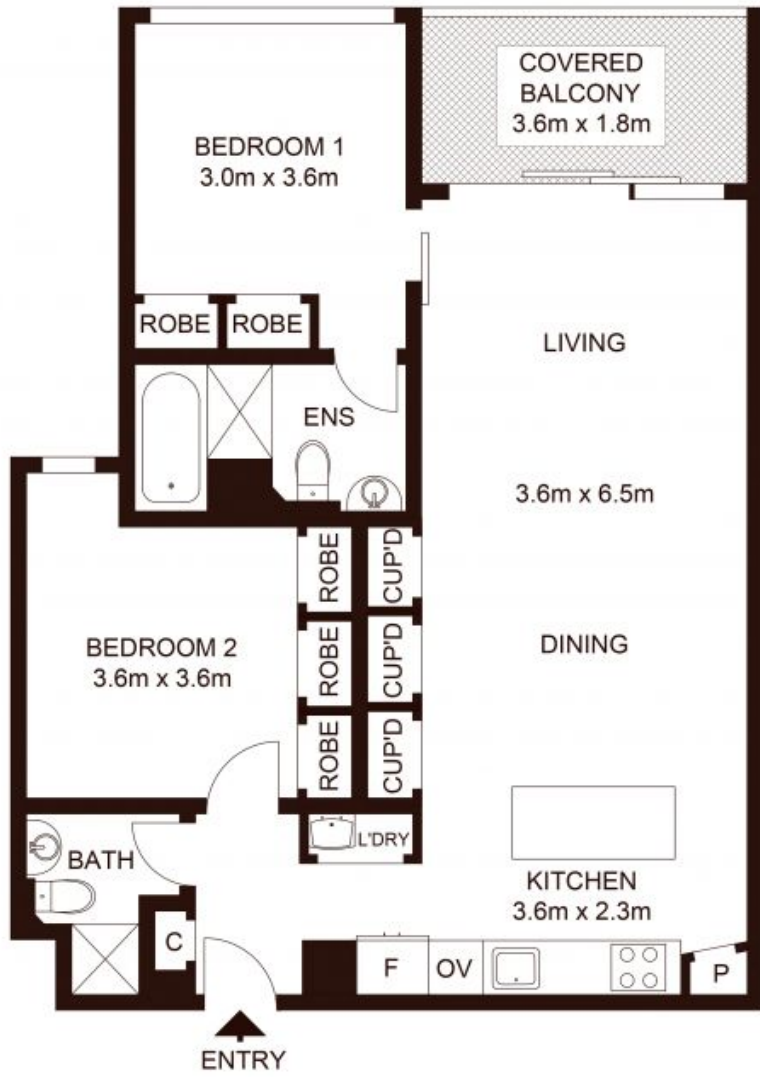
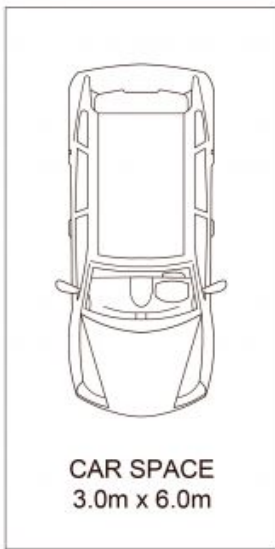
**Date Available** : Monday, 1st July 2024

**Charles Leung**

0420488278

**Tiffany Or**

0455582288



## 505/8 Central Park Avenue, CHIPPENDALE

Not to scale • All measurements are approximate • Drawn for marketing purposes only • Floorplan by © Industrie Media

