



1007/500 Pacific Highway St Leonards NSW

1  1 

Unfurnished

Spectacular one-bedroom apartment boasting flawless design and convenience, set within "The Landmark", a prominent Northshore landmark building boasting an unsurpassed location epitomizing harborside living and comfort. Just doorsteps to cafes, Restaurants, and shops. Short walking distance to the new Metro provides many options for every journey, from Chatswood to Crows Nest to the CBD, Martin Place, and Barangaroo.

Apartment features:

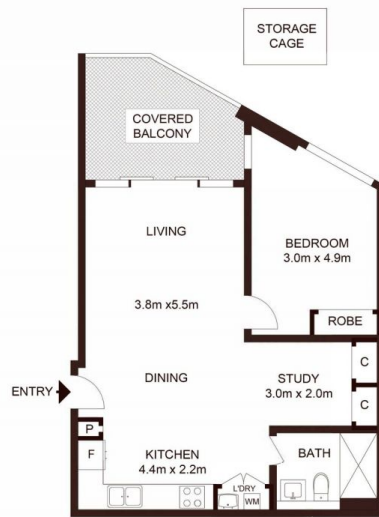
- Generous and fluid living/dining areas plus a built-in study space
- Living room flows to the east, allowing an abundance of light
- Stone-topped gas kitchen with quality integrated

Building Size : 65 sqm

View : <https://www.midlandgroup.com.au/8019274>



Tiffany Or
02 9884 8228



LEVEL 15

**Total Strata Area: 67sqm
Total Living area: 65sqm**

1508/500 Pacific Highway, ST LEONARDS

Not to scale • All measurements are approximate • Drawn for marketing purposes only • Floorplan by © Xoris Media

