



1704/130 Elizabeth Street Sydney, NSW



2



1

Experience the ultimate in urban living

This prime location ensures that you are at the heart of everything Sydney has to offer. From world-class dining and shopping to cultural landmarks and educational institutions, this apartment is perfect for those seeking a vibrant and convenient city lifestyle. Surrounded by Sydney's premier entertainment options, this apartment is just minutes from Westfield Shopping Centre, Sydney Tower, and a wide variety of shops, restaurants, cafes, and fitness centres. Enjoy the vibrant and convenient city lifestyle in this prime location.

Key Features:

- Stylish 2-bedroom apartment with built-in wardrobes
- Gourmet living area with stunning city views
- Modern open-plan kitchen featuring Germany appliances

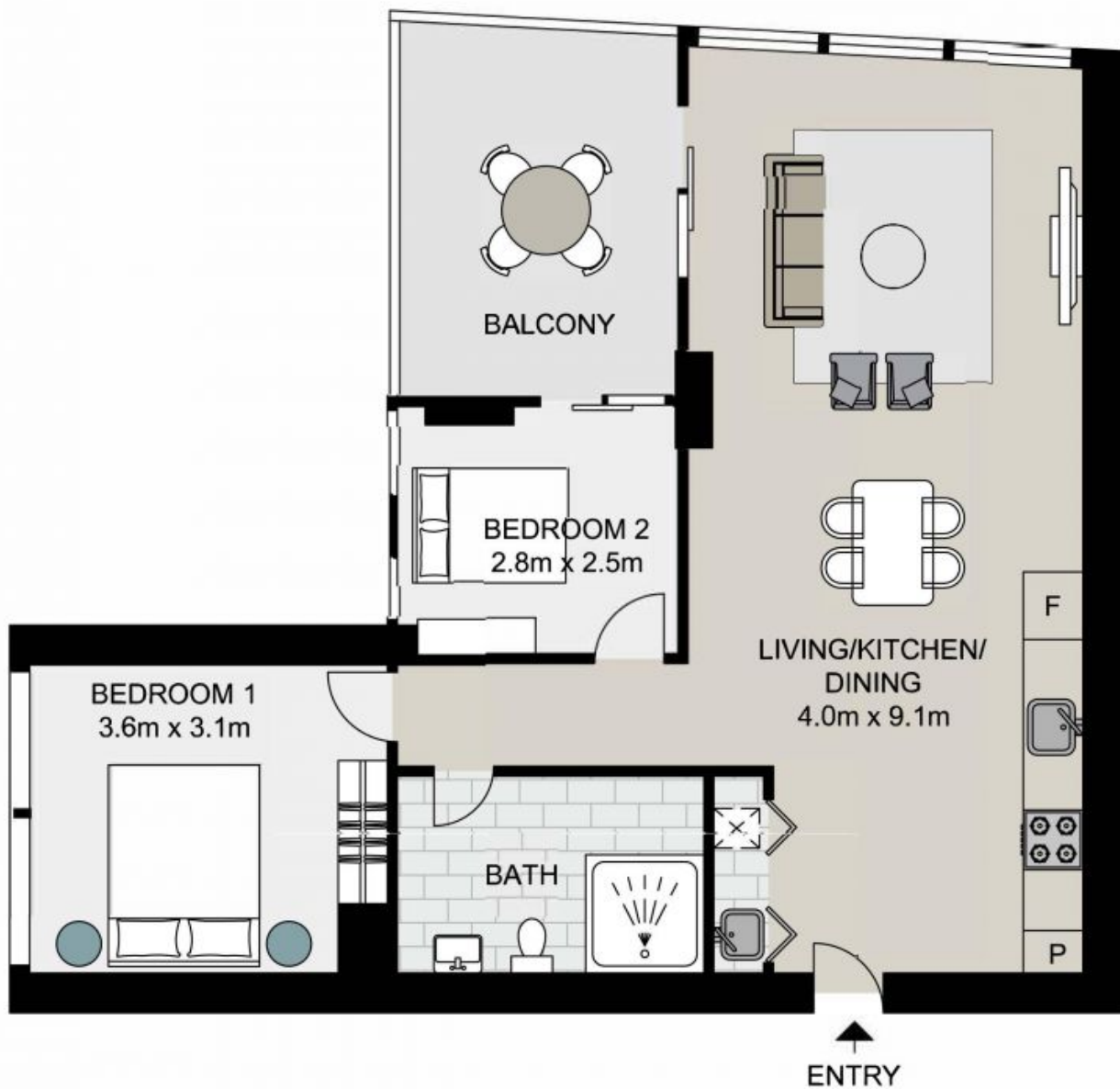
Contact Agent

Inspect :
Type : Apartment
Land : 72 m2
Building Size : 71 m2

Council Rates : \$295.30 p/q
Water Rates : \$237.16 p/q
Strata Rates : \$1,319.18 p/q

Jeffrey Li

0404 135 763



Strata area: 72sqm
Living area: 71sqm

1704/130 Elizabeth Street, SYDNEY

Not to scale . Measurements are approximate . Drawn for marketing purposes only .

