



908/486 Pacific Highway St Leonards, NSW



Cosmopolitan resort-style living in 'St Leonards Square' tower

Home Features:

- ? Open plan kitchen, living/dining flow to covered balcony
- ? Stone bench tops and gas stainless steel Miele appliances
- ? Generous bedrooms with built-in robes, one with an ensuite
- ? Stylish fully tiled bathrooms
- ? Internal laundry, ducted air conditioning, security entrance
- ? Stroll to the heart of Crows Nest village eateries and nightlife
- ? Also convenient to bus and rail transport, schools and CBD

Exclusive resident recreation facilities are located on Level 14 with impressive Sydney Harbour views including a spa, lap pool, steam room change rooms, yoga studio, gymnasium, an

Contact Agent

Type : Apartment
Land : 99 m2
Building Size : 83 m2

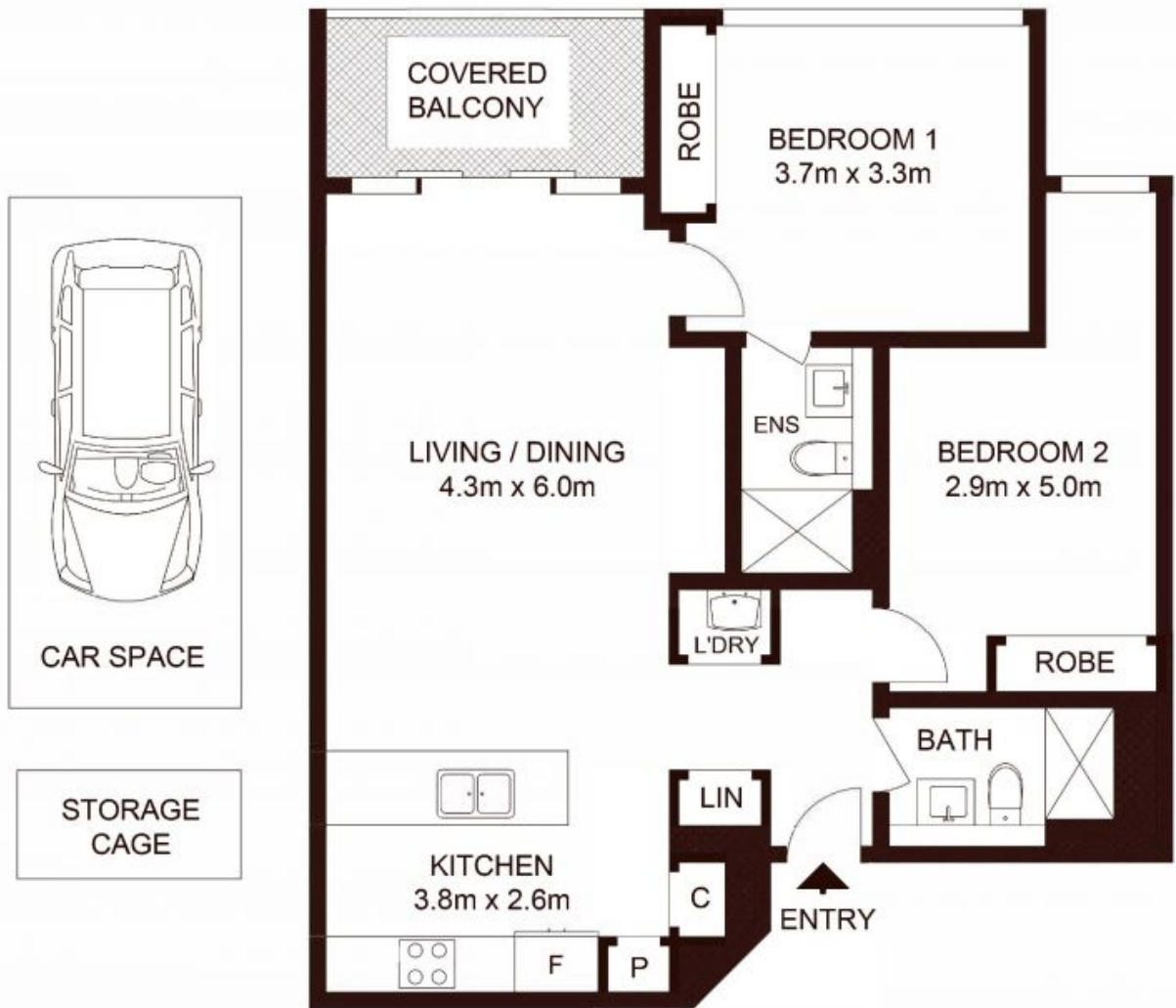
Council Rates : \$373.00 p/q
Water Rates : \$216.80 p/q
Strata Rates : \$1,308.70 p/q

Jeffrey Li

0404 135 763

Faye Dai

0423 677 160



LEVEL 9

TOTAL STRATA AREA : 99m²
 TOTAL LIVING AREA : 83m²

908/486 Pacific Highway, St Leonards

Not to scale • All measurements are approximate • Drawn for marketing purposes only • Floorplan by © Xorix Media

