



715/303 Botany Road Zetland, NSW



Designer One Bedroom Flexi Apartment with huge study/Second Bedroom

Designed by Koichi Takada Architects, the luxury apartments within this ground-breaking development have been devised with future residents in mind. Infinity by Crown Group's award-winning design means each sun-filled apartment embraces natural light and boasts expanses of living space, providing absolute seclusion from the world around you.

Features include:

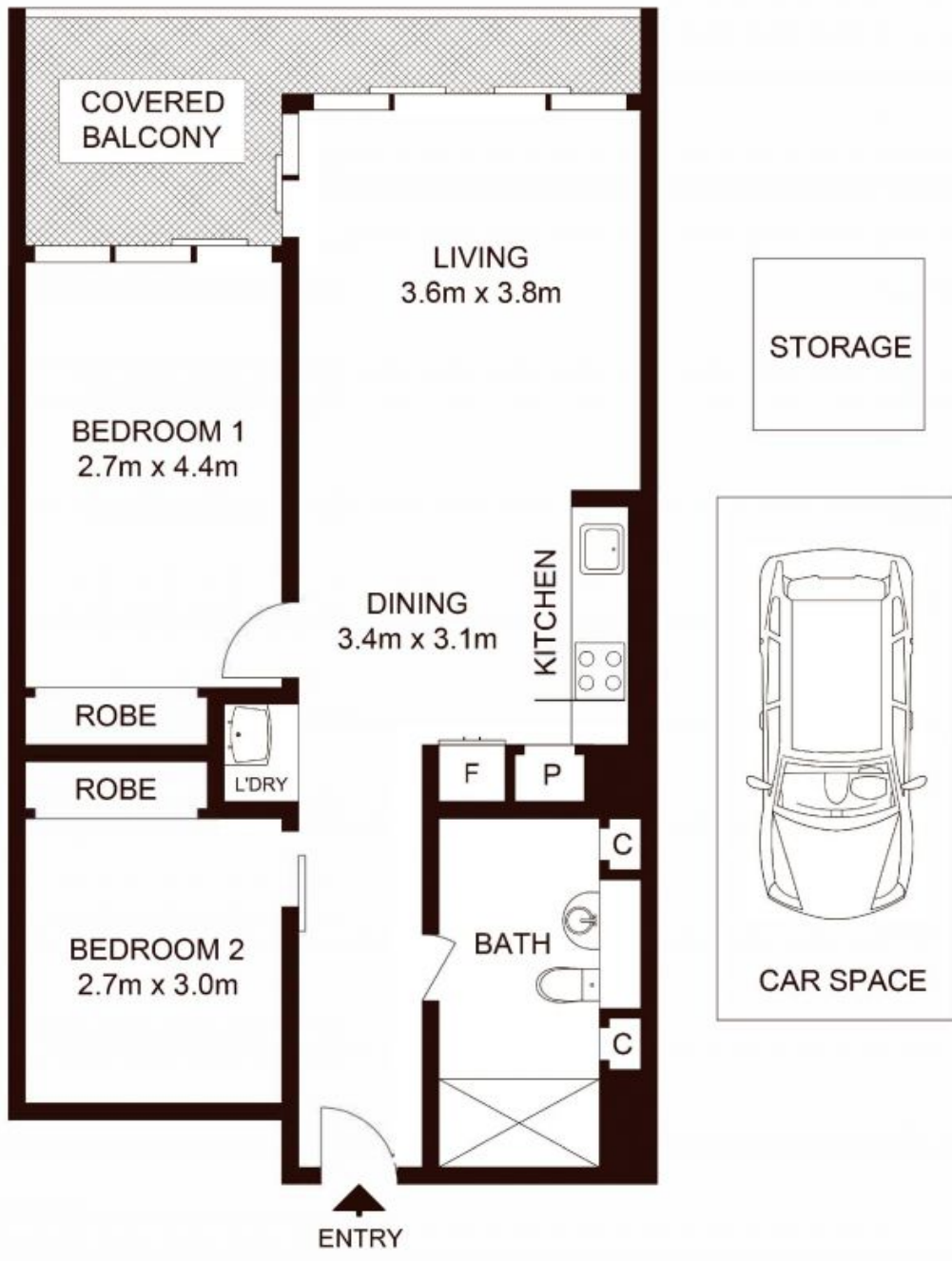
- Spacious bedrooms with built-in wardrobes
- Floor-to-ceiling glass throughout
- European appliances and leading energy-efficient home automation technology

\$1050 Per Week

Type : Apartment
Date Available : Thursday, 6th June 2024
Land : 86 m2
Building Size : 71 m2
Bond : \$2,200.00

Faye Dai

0423 677 160



LEVEL 7

TOTAL LIVING AREA: 71sqm
TOTAL STRATA AREA: 86sqm

715/303 Botany Road, ZETLAND

Not to scale • All measurements are approximate • Drawn for marketing purposes only • Floorplan by © Xorix Media

