



606/500 Pacific Highway St Leonards, NSW



North Facing Resort Style Apartment

This generously sized two-bedroom apartment is situated on the 6th floor at a prime position that incorporates a North-facing aspect with open-plan living leading out onto a massive entertainer balcony.

The Landmark puts you within easy reach of the best of the Lower North Shore and beyond. Excellent walkability and effortless transport connections, including the new Metro, provide you with an abundance of options for every journey from Chatswood to Crows Nest to the CBD, Martin Place and Barangaroo. Enjoy the convenience of this Lower North Shore location and all that it has to offer.

- Huge entertainment balcony with access from the lounge and bedroom
- North aspect with an abundance of daylight infiltration
- Lavishly appointed interior with designer crafting and elegant finishes

\$1,390,000

Inspect : Wednesday, 17th July 2024 12:30 - 1:00
 Thursday, 18th July 2024 2:30 - 3:00

Type : Apartment

Land : 127 m2

Building Size : 110 m2

Council Rates : \$373.00 p/q

Water Rates : \$195.44 p/q

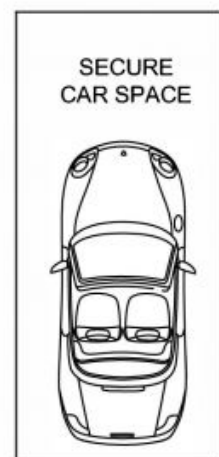
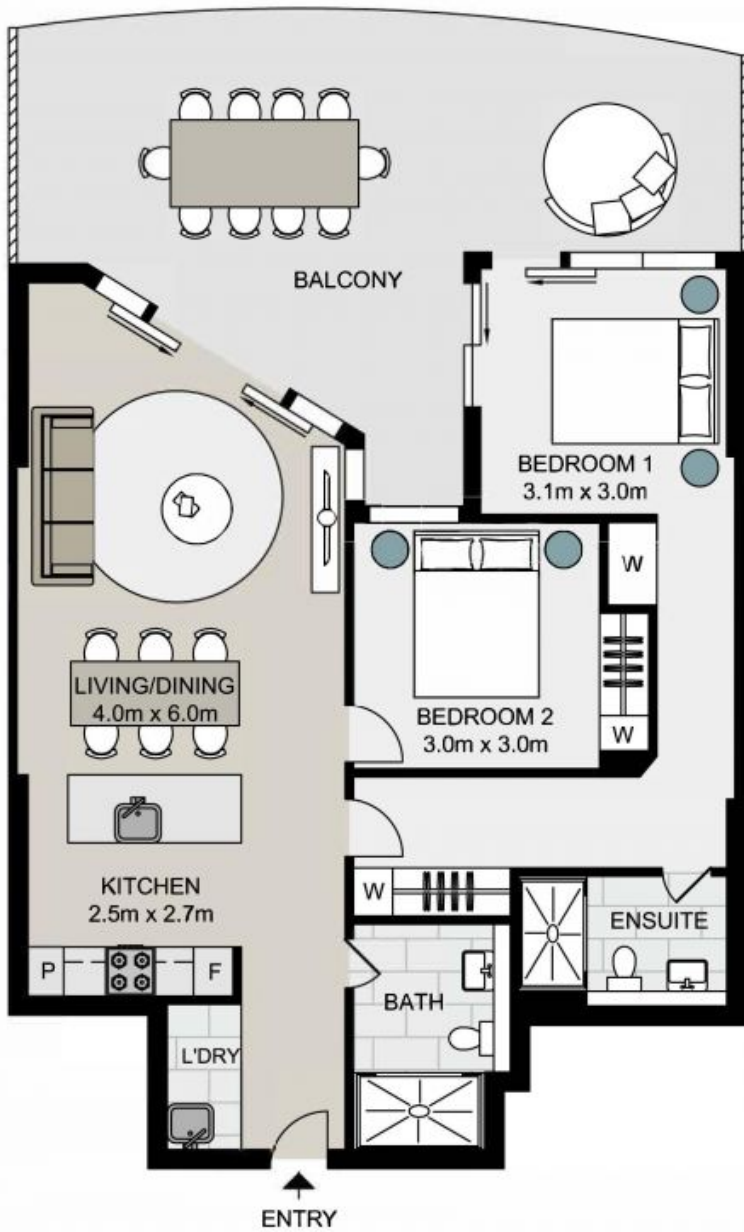
Strata Rates : \$1,337.20 p/q

Jeffrey Li

0404 135 763

Byron Davies

0424564266



Strata area: 127sqm
Living area: 110sqm

606/500 Pacific Highway, ST LEONARDS

Not to scale . Measurements are approximate . Drawn For Marketing purposes only .

