



1812/500 Pacific Highway St Leonards, NSW

 2
  2
  1

FULLY FURNISHED - Harbour Bridge views and resort-style living in a luxury build

Grasp the striking beauty of Sydney's highly regarded Harbour Bridge and cityscape exceptionally within your private sanctuary in the Landmark residence of sublimity and luxury.

Embracing a 270 degree panoramic world-class scenery at the elevated level along with an expansive wrap-around balcony for an extension of your grasp to the spectacle, this is the indulgence of your desired waterfront lifestyle amid the metropolis that shares close proximity to both nature and urban glamour.

Home Features:

DEPOSIT TAKEN \$1450 PER WEEK

Type : Apartment

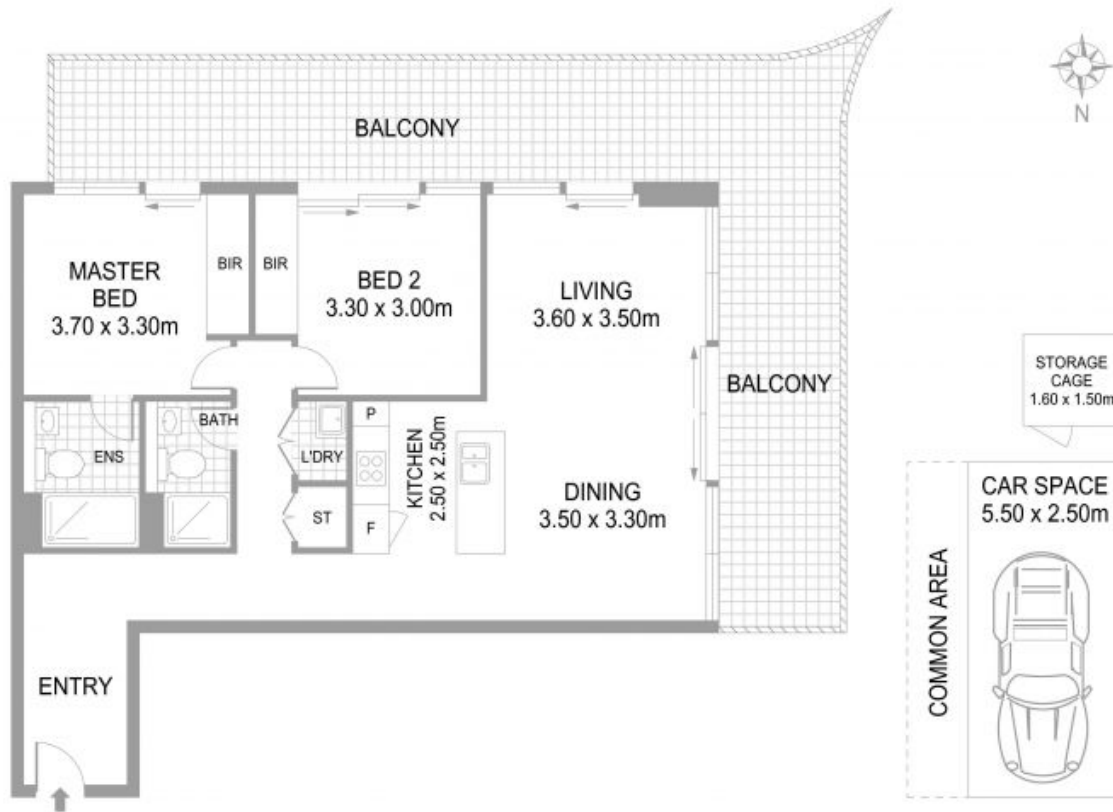
Date Available : Thursday, 2nd May 2024

Faye Dai

0423 677 160

Lewis Yung

0420488278



1812/500 PACIFIC HWY, ST. LEONARDS

Disclaimer: Please note that while the information contained in this floor plan is provided by reliable sources, we cannot guarantee its accuracy. It is intended as a guide only. Interested parties should rely on their own enquiry. Drawing not to scale. Dimensions are approximate.