

3003/500 Pacific Highway St Leonards NSW

2  2  1 

**Luxury 2BED PLUS FORMAL LOUNGE 2BATH
1PARKING**

View : <https://www.midlandgroup.com.au/7198275>

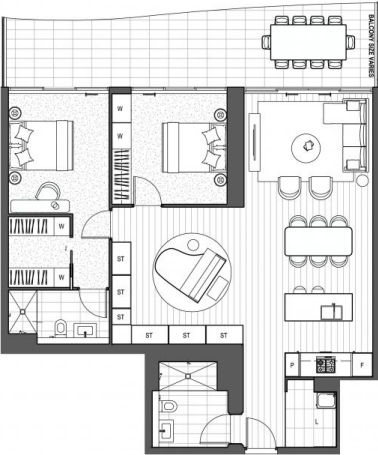
A new Lifestyle, over 1,000m2 of amenities designed to enhance your living.

Luxurious residences with expansive entertaining spaces offering spectacular views stretching from Sydney Harbour across the North Shore to Middle Harbour. Open floor plan and high-end finishes creating a modern look. Floor to ceiling thermal glass windows, large balconies, and kitted out kitchens with Miele appliances in spacious apartments with study/media areas.

Club 500, residents will enjoy an array of resort-style services and amenities.



Tiffany Or
02 9884 8228

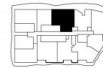


F Fridge
L Laundry
P Pantry
ST Storage
W Wardrobe

Apartment Type 2 Bedroom + Formal Lounge
Bathroom 2
Internal 109 m²
External 28 m²
Parking 1

THE LANDMARK

Sculpted from Sydney



Two Bed+Formal Lounge Apartment
Type A

Disclaimer: Colliers International does not guarantee, warrant or represent that the information contained in this advertising and marketing document is correct. Any interested parties should make their own enquiries as to the accuracy of the information. We exclude all inferred or implied terms, conditions and warranties arising out of this document and any liability for loss or damage arising there from.