



3506/486 Pacific Highway St Leonards, NSW



Bespoke Luxury Split Level One bedroom with unparalleled City and Harbour views

Capturing sweeping views from Mosman, The Heads towards the city and the Sydney Harbour, this light-infused one-bedroom penthouse in the prestigious 'Mirvac' building encapsulates the best in apartment living.

One of only split level one bedrooms in the area, which is located on the penthouse level of level 34 & 35, this is the collection of rare assets you have been waiting for.

With first-class amenities, including a modern gym and sparkling pool. This apartment is situated within reach of fine retail and entertainment facilities nearby, serviced by major public transport routes.

Apartment Features:

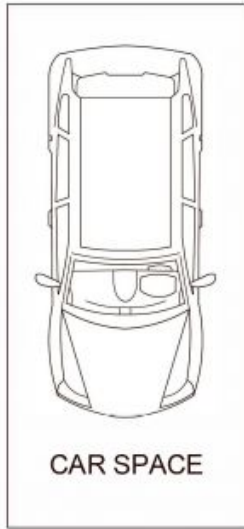
Contact Agent

Type : Apartment
Sold Date : Friday, 16th September 2022
Land : 83 m2
Building Size : 83 m2

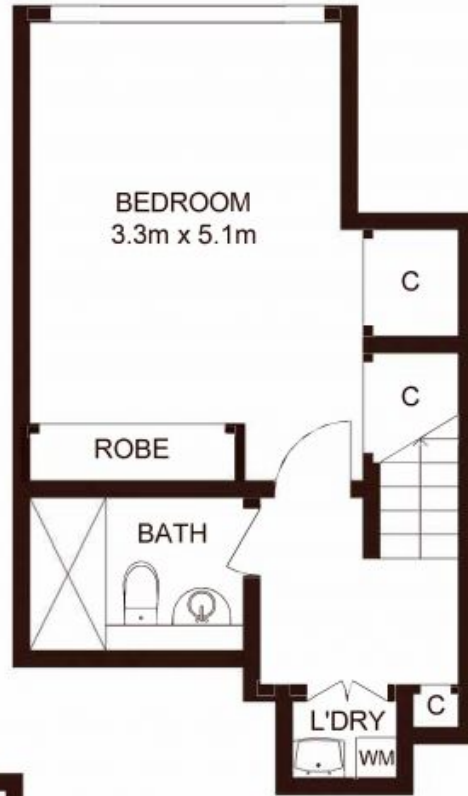
Council Rates : \$352.00 p/q
Water Rates : \$172.41 p/q
Strata Rates : \$1,426.00 p/q

Jeffrey Li

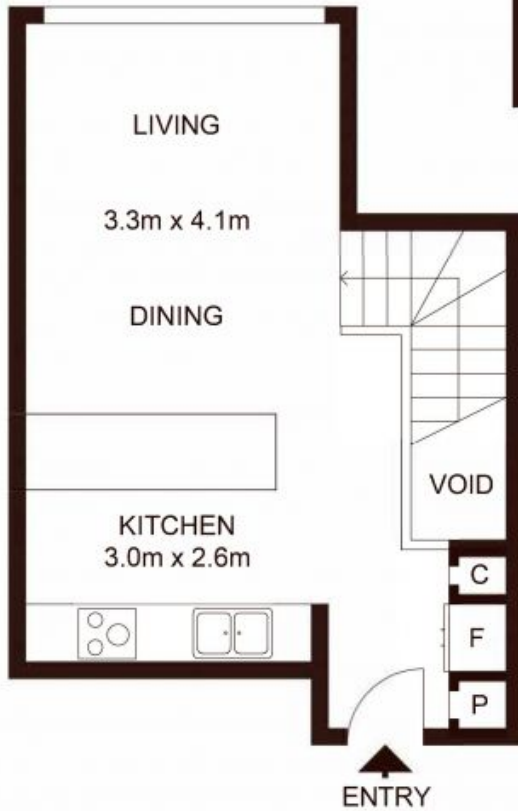
0404 135 763



STORAGE



LEVEL 34
(LOWER LEVEL)



LEVEL 35
(UPPER LEVEL)

TOTAL STRATA AREA : 83m²
TOTAL INTERNAL AREA : 65m²

3506/486 Pacific Highway, ST LEONARDS

Not to scale • All measurements are approximate • Drawn for marketing purposes only • Floorplan by © Xorix Media

