



201E/599 Pacific Highway St Leonards, NSW



## Bright and Breezy layout with a cosmopolitan lifestyle

A stunning large and quiet two-bedroom with a fantastic cross flow layout adds another level of sophistication to this spectacular 2nd floor 112sqm living area apartment, set in the luxurious 'Abode', St Leonard's most prestigious residential development. Positioned for pure convenience, Abode is mere metres to the station and minutes away from the CBD.

- Bright and breezy interiors include a generous open design
- Rare cross flow layout with excellent ventilation
- Stylishly appointed with timber floors, all the way to floor-to-ceiling glass sliding doors
- Large glass panels lead to a wide entertainers' terrace
- Fully integrated Caesarstone kitchen with quality appliances

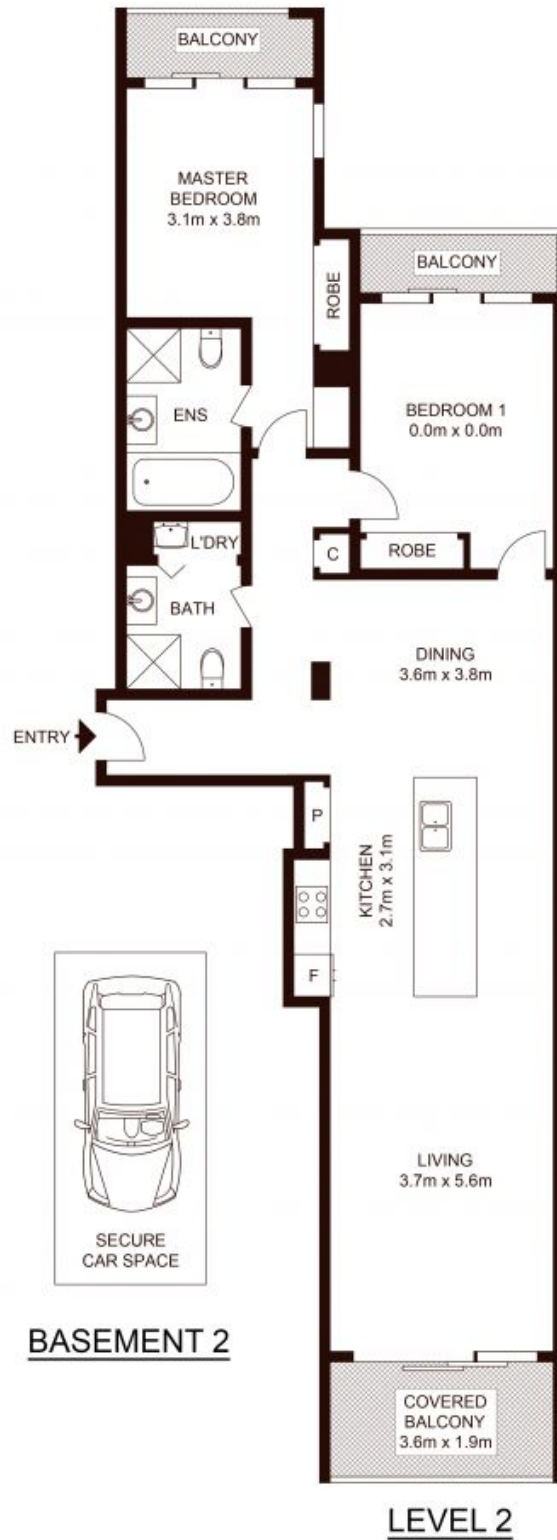
## Auction

**Type** : Apartment  
**Sold Date** : Monday, 6th December 2021  
**Land** : 126 m2  
**Building Size** : 112 m2

**Council Rates** : \$288.00 p/q  
**Water Rates** : \$157.31 p/q  
**Strata Rates** : \$1,455.30 p/q

**Jeffrey Li**

0404 135 763



# 201E/599 Pacific Highway, ST LEONARDS

Not to scale • All measurements are approximate • Drawn for marketing purposes only • Floorplan by © Xorix Media

