



### A2003/8 Walker Street Rhodes NSW

3  2  1 

Introducing the latest addition to Rhodes Central's visionary urban waterside village living. Floating skyward, this shimmering copper-faced tower lights up the inner reaches of Sydney Harbour, holding a mirror to Rhodes peninsula's multifaceted charms.

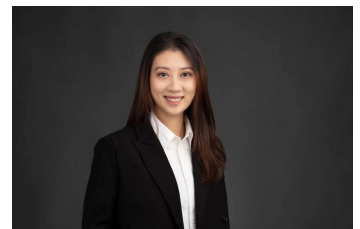
This beautiful new tower Rhodes Central opens rare opportunities to live magnificently in a dynamic new village precinct where everything including Rhodes Train Station, Rhodes Shopping Centre, Restaurant and Cafes is just within steps downstairs.

Living by the water has never been easier, with trains and buses to the CBD just minutes from your doorstep, allowing you to enjoy more of your free time at home in spectacular surrounds.

**View :** <https://www.midlandgroup.com.au/6688810>



**Tiffany Or**  
02 9884 8228



**Joanna Wang**  
0475 228 888



24-10-16



Disclaimer: The information and illustrations in this plan are indicative only and are subject to change. Walker Forest Developments Pty Limited and its related entities or subsidiaries (including the landowner) and their agents do not warrant the accuracy of and do not accept any liability for any error or discrepancy in this information and illustrations. Any furniture or appliances depicted (including possible furniture and appliance locations) are illustrative only, will not form part of the property sold and are not definitive of the purpose for which any area within the property can be used. The depicted information and illustrations do not form part of any contract for sale, and interested parties must rely on their own enquiries and the information in the contract for sale.



**RHODES  
CENTRAL**

**Apartment**

A.08.03 A.09.03 A.10.03 A.11.03 A.12.03

A.13.03 A.14.03 A.15.03 A.16.03 A.17.03

A.18.03 A.19.03 A.20.03

**Strata Area**

**112m<sup>2</sup>**

☒ Balcony



**Billbergia**  
creating communities®