

G04/63-85 Victoria Street Beaconsfield, NSW

 2
  2
  1

Immaculate Two Bedroom Terrace in 'The Tree house'. Check our online tour!

Vendor say must sell!

Showcasing premium contemporary finishes throughout, this immaculate apartment is perfectly crafted for executive living across 130sqm. Displaying both stylish modern space and effortless convenience, it offers a sleek and spacious design that is ideal for young professionals, downsizers and investors with a flowing single level layout of exceptional quality.

All this and a great location that is within a short walk to Green Square station, city buses, local shops and neighbourhood cafes.

- Ground floor position with choice of three separate entrances

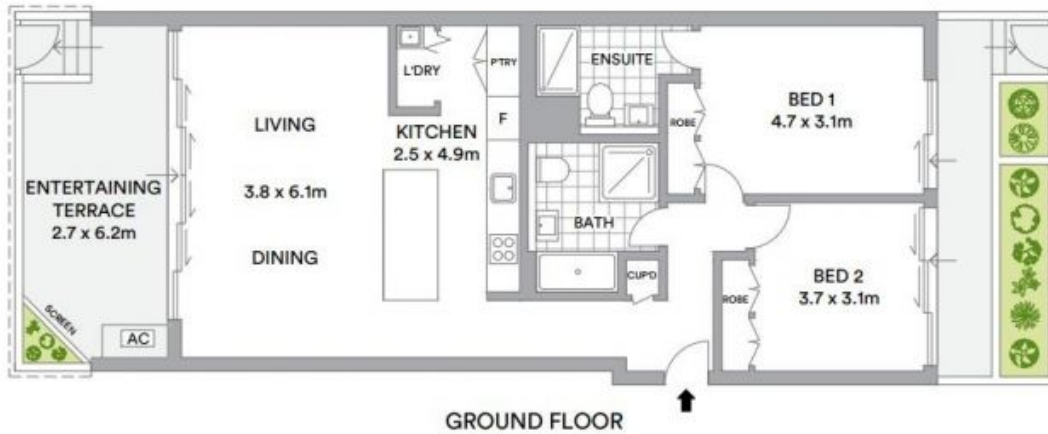
SOLD

Type : Apartment
Sold Date : Friday, 1st January 2021

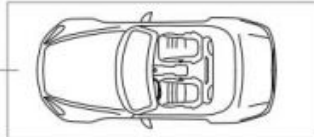
Council Rates : \$279.10 p/q
Water Rates : \$212.41 p/q
Strata Rates : \$1,681.30 p/q

Jeffrey Li
 0404 135 763

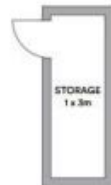
Faye Dai
 0423 677 160



SECURE
CAR SPACE
5.7 x 2.5m



BASEMENT



LOWER LEVEL



Living space 114sqm
Total 130sqm